



Four Corners Water Reclamation Facility (WRF)

Public Information Meeting March 27, 2018

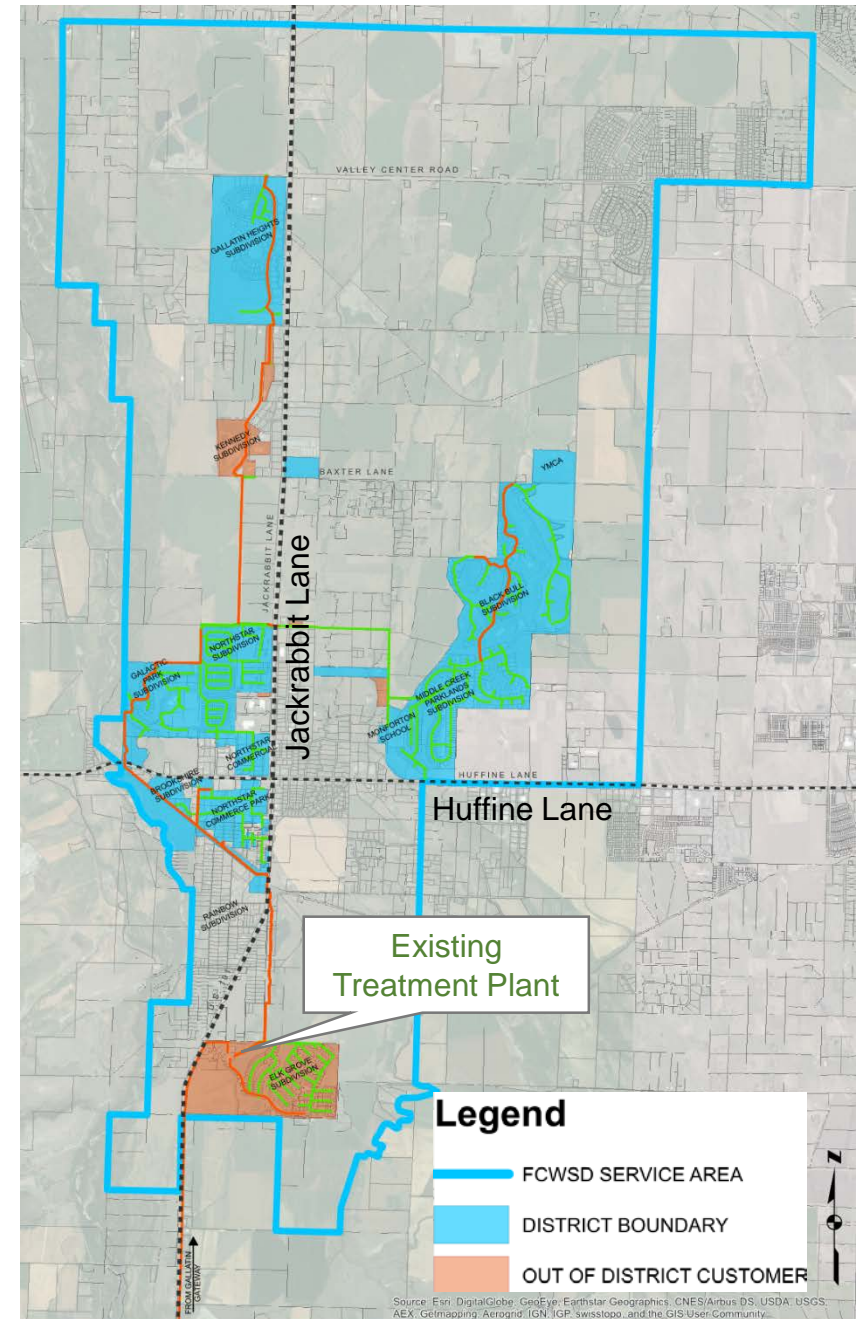
What is a Water Reclamation Facility (WRF)?

- A Water Reclamation Facility (WRF) is a facility that treats wastewater to be reused for other purposes.
- Examples of reuse include irrigation, groundwater recharge, snow making, etc.
- Four Corners Water and Sewer District utilizes groundwater recharge

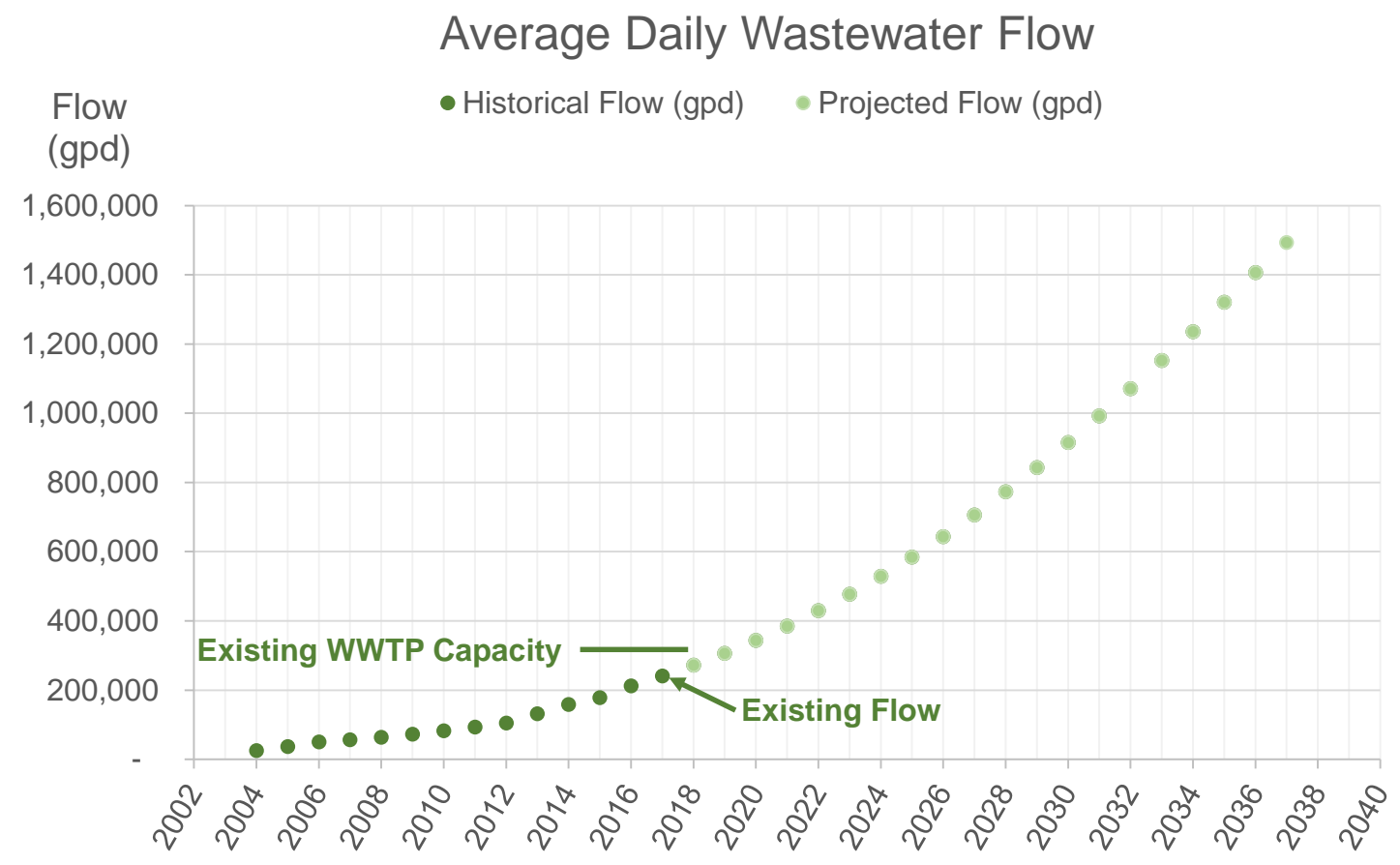


District History

- The Four Corners Water and Sewer District was established in 2003.
- The District contracted with Utility Solutions, LLC to provide water and sewer service to properties within the District.
- The District purchased the water and sewer system infrastructure in late 2015 with approval of District voters.
- The District now owns and maintains the entire system.
- The existing Elk Grove Wastewater Treatment Plant is nearing capacity.



Project Need



Project Goals

- Continue to meet and exceed current and anticipated permit requirements
- Honor current service commitments and avoid overflows
- Treatment process housed within building
- Odor control measures

Planning Process

- Analyzed financial status of District and established an initial budget of \$8.2 million
- Evaluated several treatment technology alternatives

Treatment Alternatives

Option 1 – Oxidation Ditch

Aeration



Secondary Clarifiers

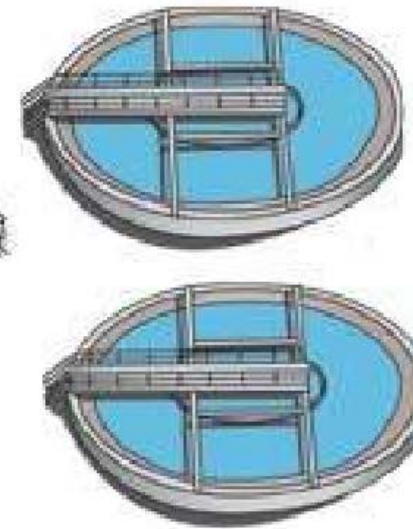
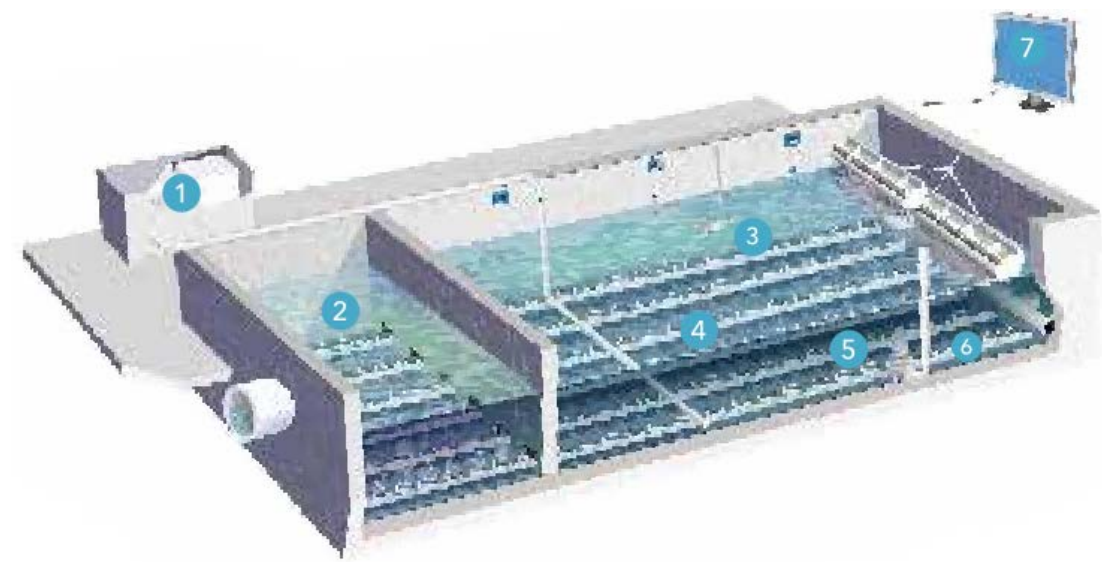


image courtesy of Lakeside

Treatment Alternatives

Option 2 – Sequencing Batch Reactor (SBR)



- 1 Blowers
- 2 Pre-react
- 3 Mixer
- 4 Aeration
- 4 Aeration
- 5 Pump
- 6 Decanter
- 7 Process control

image courtesy of Sanitaire

Treatment Alternatives

Option 3 – Membrane Bioreactor (MBR)

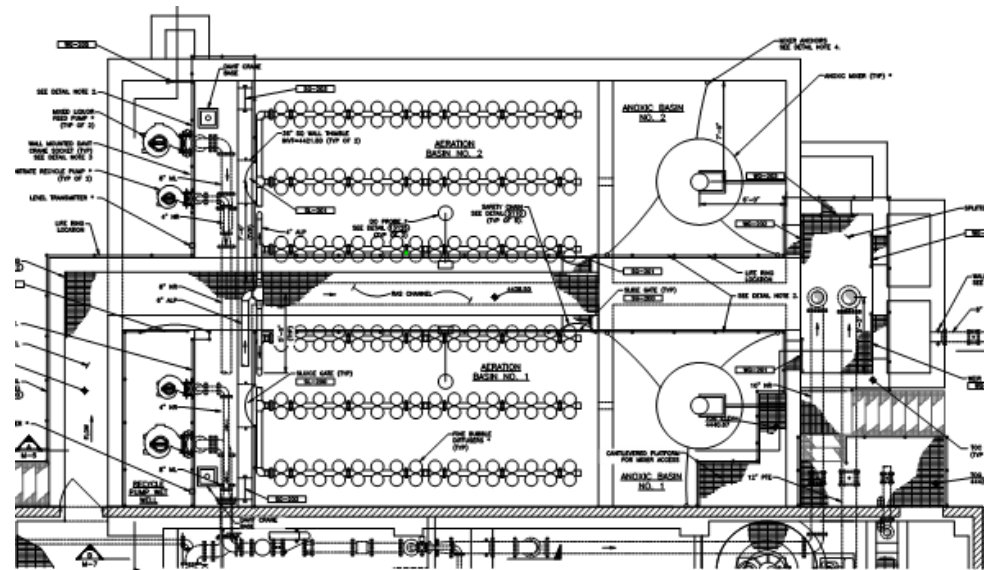


image courtesy of Ovivo

Selected Treatment Technology

Sequencing Batch Reactor (SBR)

- Meets treatment requirements
- Compact footprint
- Housed in building
- Expandable in increments



Phased Approach

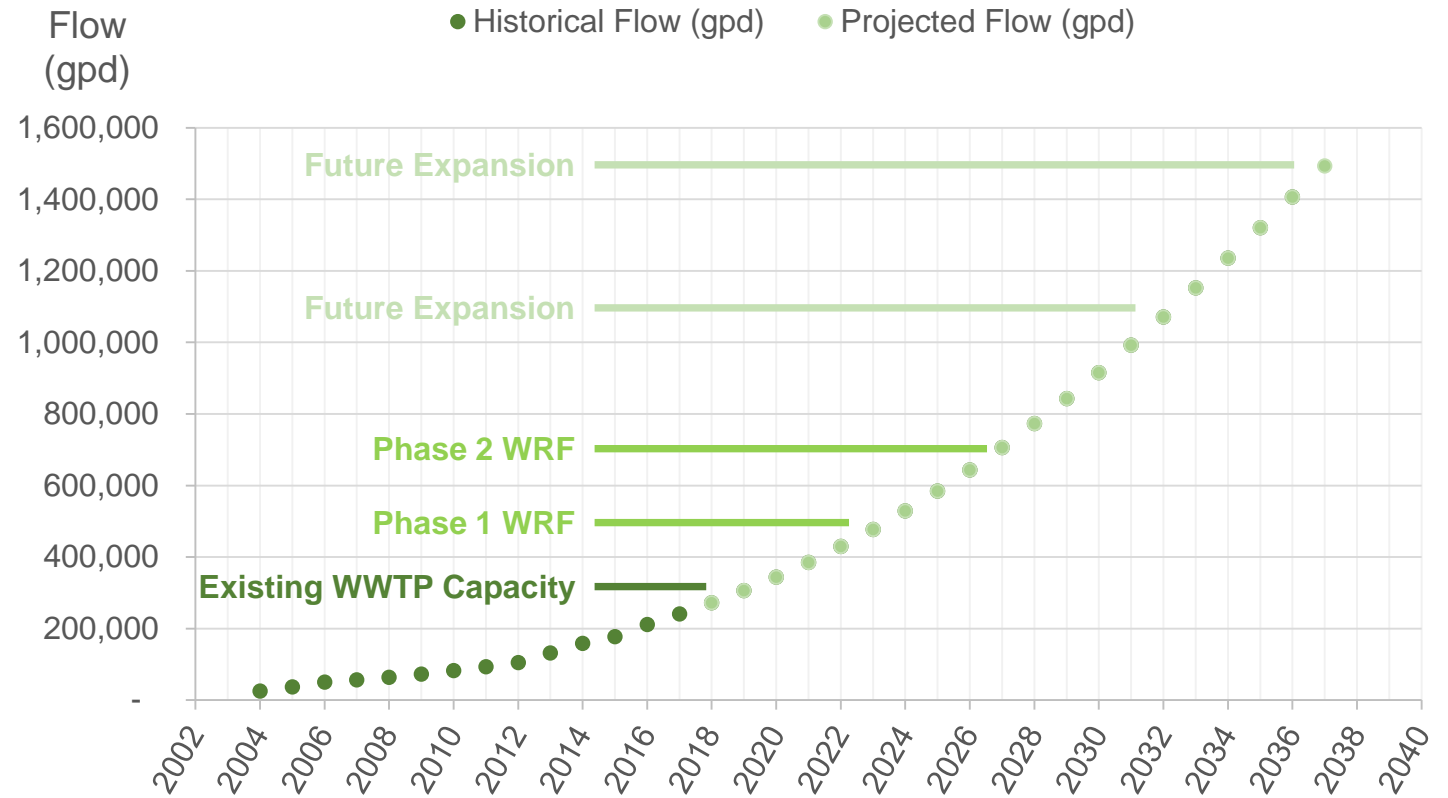
Incremental expansion

- As warranted by growth
- New users contribute funding

Potential Funding Sources

- Reserves
- Capacity fees, new users
- Low interest loans
- District weighing options

Average Daily Wastewater Flow



Location

Project site

- District owned property
- Identified in previous facility plans
- Adjacent to outfall



Questions / Comments